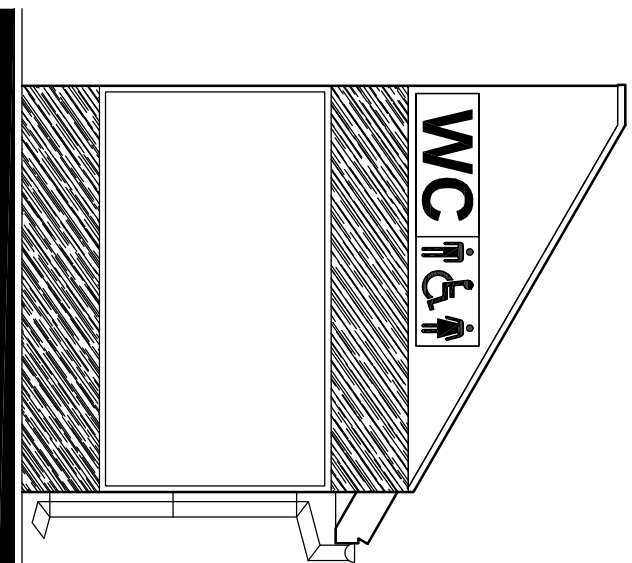
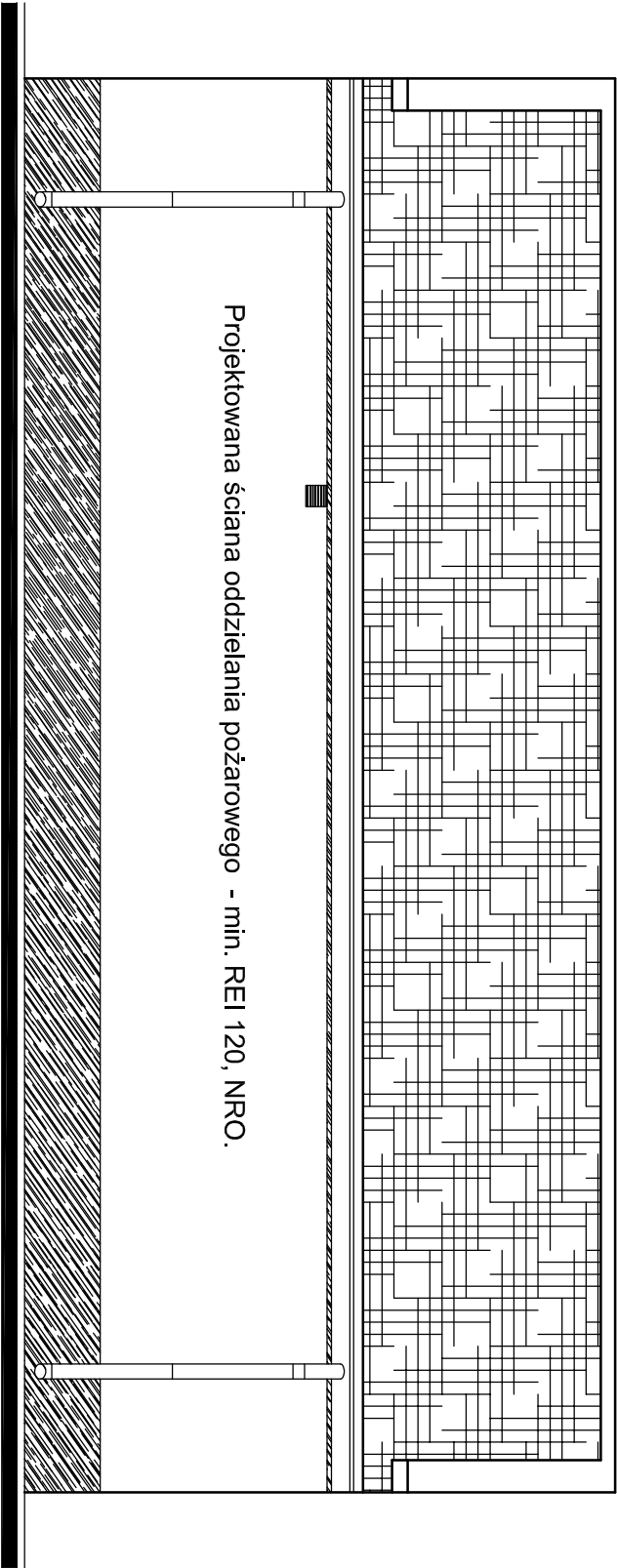


## Elewacja Frontowa

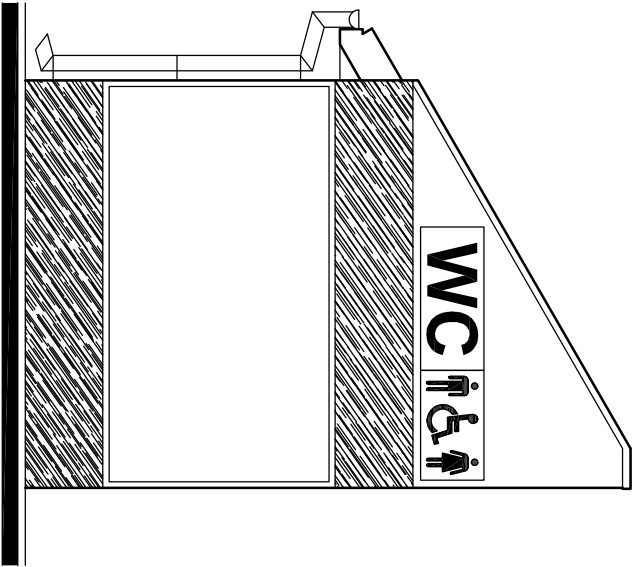


# Elevacja Lewa

<p><b>W&amp;R Projekt</b> <b>Wojciech Rynduch</b> <b>ul. Zwierzyńca 9</b> <b>39-439 Sokolniki</b></p>		<p>tel. 797019497 email: rynduchw@poczta.onet.pl</p>
<p><b>Opis:</b></p> <p>Projekt inż. Paweł Dul mgr inż. Marek Proń</p>	<p>opracowanie projektu w oparciu o: - projekt zagospodarowania - projekt architektury - projekt instalacji elektrycznej</p>	<p><b>Podpis</b></p>
<p>mgr inż. Wojciech Rynduch</p>	<p>opracowanie projektu w oparciu o: - projekt zagospodarowania - projekt architektury - projekt instalacji elektrycznej</p>	<p><b>Nazwa rysunku:</b> <b>Elewacje cz. 1 B-WC</b></p>
<p><b>Obiek:</b></p> <p>"Zagospodarowanie centrum osiedla mieszkaniowego w Gorzycach - Techniczny ogrod - etap II"</p> <p>Budynec WOC</p>	<p>Investor: Gmina Gorzyce ul. Sandomierska 75, 39-432 Gorzyce NIP 807-207-154</p>	<p><b>Skala:</b> 1:50</p> <p>N rys.</p>
<p><b>Legenda:</b></p> <p>1. Gorzyce, gm. Gorzyce 254/9, 26, 284/3, 284/4, 284/10, 286/2, 284/14, 284/9, 285, 285/1, 286/1, 286/2, 286/3, 286/4, 286/5, 286/6, 286/7, 286/11, 286/12, 286/13, 286/14, 286/15, 286/16, 286/17, 286/18, 286/19, 286/20, 286/21, 286/22, 286/23, 286/24, 286/25, 286/26, 286/27, 286/28, 286/29, 286/30, 286/31, 286/32, 286/33, 286/34, 286/35, 286/36, 286/37, 286/38, 286/39, 286/40, 286/41, 286/42, 286/43, 286/44, 286/45, 286/46, 286/47, 286/48, 286/49, 286/50, 286/51, 286/52, 286/53, 286/54, 286/55, 286/56, 286/57, 286/58, 286/59, 286/60, 286/61, 286/62, 286/63, 286/64, 286/65, 286/66, 286/67, 286/68, 286/69, 286/70, 286/71, 286/72, 286/73, 286/74, 286/75, 286/76, 286/77, 286/78, 286/79, 286/80, 286/81, 286/82, 286/83, 286/84, 286/85, 286/86, 286/87, 286/88, 286/89, 286/90, 286/91, 286/92, 286/93, 286/94, 286/95, 286/96, 286/97, 286/98, 286/99, 286/100, 286/101, 286/102, 286/103, 286/104, 286/105, 286/106, 286/107, 286/108, 286/109, 286/110, 286/111, 286/112, 286/113, 286/114, 286/115, 286/116, 286/117, 286/118, 286/119, 286/120, 286/121, 286/122, 286/123, 286/124, 286/125, 286/126, 286/127, 286/128, 286/129, 286/130, 286/131, 286/132, 286/133, 286/134, 286/135, 286/136, 286/137, 286/138, 286/139, 286/140, 286/141, 286/142, 286/143, 286/144, 286/145, 286/146, 286/147, 286/148, 286/149, 286/150, 286/151, 286/152, 286/153, 286/154, 286/155, 286/156, 286/157, 286/158, 286/159, 286/160, 286/161, 286/162, 286/163, 286/164, 286/165, 286/166, 286/167, 286/168, 286/169, 286/170, 286/171, 286/172, 286/173, 286/174, 286/175, 286/176, 286/177, 286/178, 286/179, 286/180, 286/181, 286/182, 286/183, 286/184, 286/185, 286/186, 286/187, 286/188, 286/189, 286/190, 286/191, 286/192, 286/193, 286/194, 286/195, 286/196, 286/197, 286/198, 286/199, 286/200, 286/201, 286/202, 286/203, 286/204, 286/205, 286/206, 286/207, 286/208, 286/209, 286/210, 286/211, 286/212, 286/213, 286/214, 286/215, 286/216, 286/217, 286/218, 286/219, 286/220, 286/221, 286/222, 286/223, 286/224, 286/225, 286/226, 286/227, 286/228, 286/229, 286/230, 286/231, 286/232, 286/233, 286/234, 286/235, 286/236, 286/237, 286/238, 286/239, 286/240, 286/241, 286/242, 286/243, 286/244, 286/245, 286/246, 286/247, 286/248, 286/249, 286/250, 286/251, 286/252, 286/253, 286/254, 286/255, 286/256, 286/257, 286/258, 286/259, 286/260, 286/261, 286/262, 286/263, 286/264, 286/265, 286/266, 286/267, 286/268, 286/269, 286/270, 286/271, 286/272, 286/273, 286/274, 286/275, 286/276, 286/277, 286/278, 286/279, 286/280, 286/281, 286/282, 286/283, 286/284, 286/285, 286/286, 286/287, 286/288, 286/289, 286/290, 286/291, 286/292, 286/293, 286/294, 286/295, 286/296, 286/297, 286/298, 286/299, 286/300, 286/301, 286/302, 286/303, 286/304, 286/305, 286/306, 286/307, 286/308, 286/309, 286/310, 286/311, 286/312, 286/313, 286/314, 286/315, 286/316, 286/317, 286/318, 286/319, 286/320, 286/321, 286/322, 286/323, 286/324, 286/325, 286/326, 286/327, 286/328, 286/329, 286/330, 286/331, 286/332, 286/333, 286/334, 286/335, 286/336, 286/337, 286/338, 286/339, 286/340, 286/341, 286/342, 286/343, 286/344, 286/345, 286/346, 286/347, 286/348, 286/349, 286/350, 286/351, 286/352, 286/353, 286/354, 286/355, 286/356, 286/357, 286/358, 286/359, 286/360, 286/361, 286/362, 286/363, 286/364, 286/365, 286/366, 286/367, 286/368, 286/369, 286/370, 286/371, 286/372, 286/373, 286/374, 286/375, 286/376, 286/377, 286/378, 286/379, 286/380, 286/381, 286/382, 286/383, 286/384, 286/385, 286/386, 286/387, 286/388, 286/389, 286/390, 286/391, 286/392, 286/393, 286/394, 286/395, 286/396, 286/397, 286/398, 286/399, 286/400, 286/401, 286/402, 286/403, 286/404, 286/405, 286/406, 286/407, 286/408, 286/409, 286/410, 286/411, 286/412, 286/413, 286/414, 286/415, 286/416, 286/417, 286/418, 286/419, 286/420, 286/421, 286/422, 286/423, 286/424, 286/425, 286/426, 286/427, 286/428, 286/429, 286/430, 286/431, 286/432, 286/433, 286/434, 286/435, 286/436, 286/437, 286/438, 286/439, 286/440, 286/441, 286/442, 286/443, 286/444, 286/445, 286/446, 286/447, 286/448, 286/449, 286/450, 286/451, 286/452, 286/453, 286/454, 286/455, 286/456, 286/457, 286/458, 286/459, 286/460, 286/461, 286/462, 286/463, 286/464, 286/465, 286/466, 286/467, 286/468, 286/469, 286/470, 286/471, 286/472, 286/473, 286/474, 286/475, 286/476, 286/477, 286/478, 286/479, 286/480, 286/481, 286/482, 286/483, 286/484, 286/485, 286/486, 286/487, 286/488, 286/489, 286/490, 286/491, 286/492, 286/493, 286/494, 286/495, 286/496, 286/497, 286/498, 286/499, 286/500, 286/501, 286/502, 286/503, 286/504, 286/505, 286/506, 286/507, 286/508, 286/509, 286/510, 286/511, 286/512, 286/513, 286/514, 286/515, 286/516, 286/517, 286/518, 286/519, 286/520, 286/521, 286/522, 286/523, 286/524, 286/525, 286/526, 286/527, 286/528, 286/529, 286/530, 286/531, 286/532, 286/533, 286/534, 286/535, 286/536, 286/537, 286/538, 286/539, 286/540, 286/541, 286/542, 286/543, 286/544, 286/545, 286/546, 286/547, 286/548, 286/549, 286/550, 286/551, 286/552, 286/553, 286/554, 286/555, 286/556, 286/557, 286/558, 286/559, 286/560, 286/561, 286/562, 286/563, 286/564, 286/565, 286/566, 286/567, 286/568, 286/569, 286/570, 286/571, 286/572, 286/573, 286/574, 286/575, 286/576, 286/577, 286/578, 286/579, 286/580, 286/581, 286/582, 286/583, 286/584, 286/585, 286/586, 286/587, 286/588, 286/589, 286/590, 286/591, 286/592, 286/593, 286/594, 286/595, 286/596, 286/597, 286/598, 286/599, 286/600, 286/601, 286/602, 286/603, 286/604, 286/605, 286/606, 286/607, 286/608, 286/609, 286/610, 286/611, 286/612, 286/613, 286/614, 286/615, 286/616, 286/617, 286/618, 286/619, 286/620, 286/621, 286/622, 286/623, 286/624, 286/625, 286/626, 286/627, 286/628, 286/629, 286/630, 286/631, 286/632, 286/633, 286/634, 286/635, 286/636, 286/637, 286/638, 286/639, 286/640, 286/641, 286/642, 286/643, 286/644, 286/645, 286/646, 286/647, 286/648, 286/649, 286/650, 286/651, 286/652, 286/653, 286/654, 286/655, 286/656, 286/657, 286/658, 286/659, 286/660, 286/661, 286/662, 286/663, 286/664, 286/665, 286/666, 286/667, 286/668, 286/669, 286/670, 286/671, 286/672, 286/673, 286/674, 286/675, 286/676, 286/677, 286/678, 286/679, 286/680, 286/681, 286/682, 286/683, 286/684, 286/685, 286/686, 286/687, 286/688, 286/689, 286/690, 286/691, 286/692, 286/693, 286/694, 286/695, 286/696, 286/697, 286/698, 286/699, 286/700, 286/701, 286/702, 286/703, 286/704, 286/705, 286/706, 286/707, 286/708, 286/709, 286/710, 286/711, 286/712, 286/713, 286/714, 286/715, 286/716, 286/717, 286/718, 286/719, 286/720, 286/721, 286/722, 286/723, 286/724, 286/725, 286/726, 286/727, 286/728, 286/729, 286/730, 286/731, 286/732, 286/733, 286/734, 286/735, 286/736, 286/737, 286/738, 286/739, 286/740, 286/741, 286/742, 286/743, 286/744, 286/745, 286/746, 286/747, 286/748, 286/749, 286/750, 286/751, 286/752, 286/753, 286/754, 286/755, 286/756, 286/757, 286/758, 286/759, 286/760, 286/761, 286/762, 286/763, 286/764, 286/765, 286/766, 286/767, 286/768, 286/769, 286/770, 286/771, 286/772, 286/773, 286/774, 286/775, 286/776, 286/777, 286/778, 286/779, 286/780, 286/781, 286/782, 286/783, 286/784, 286/785, 286/786, 286/787, 286/788, 286/789, 286/790, 286/791, 286/792, 286/793, 286/794, 286/795, 286/796, 286/797, 286/798, 286/799, 286/800, 286/801, 286/802, 286/803, 286/804, 286/805, 286/806, 286/807, 286/808, 286/809, 286/810, 286/811, 286/812, 286/813, 286/814, 286/815, 286/816, 286/817, 286/818, 286/819, 286/820, 286/821, 286/822, 286/823, 286/824, 286/825, 286/826, 286/827, 286/828, 286/829, 286/830, 286/831, 286/832, 286/833, 286/834, 286/835, 286/836, 286/837, 286/838, 286/839, 286/840, 286/841, 286/842, 286/843, 286/844, 286/845, 286/846, 286/847, 286/848, 286/849, 286/850, 286/851, 286/852, 286/853, 286/854, 286/855, 286/856, 286/857, 286/858, 286/859, 286/860, 286/861, 286/862, 286/863, 286/864, 286/865, 286/866, 286/867, 286/868, 286/869, 286/870, 286/871, 286/872, 286/873, 286/874, 286/875, 286/876, 286/877, 286/878, 286/879, 286/880, 286/881, 286/882, 286/883, 286/884, 286/885, 286/886, 286/887, 286/888, 286/889, 286/890, 286/891, 286/892, 286/893, 286/894, 286/895, 286/896, 286/897, 286/898, 286/899, 286/900, 286/901, 286/902, 286/903, 286/904, 286/905, 286/906, 286/907, 286/908, 286/909, 286/910, 286/911, 286/912, 286/913, 286/914, 286/915, 286/916, 286/917, 286/918, 286/919, 286/920, 286/921, 286/922, 286/923, 286/924, 286/925, 286/926, 286/927, 286/928, 286/929, 286/930, 286/931, 286/932, 286/933, 286/934, 286/935, 286/936, 286/937, 286/938, 286/939, 286/940, 286/941, 286/942, 286/943, 286/944, 286/945, 286/946, 286/947, 286/948, 286/949, 286/950, 286/951, 286/952, 286/953, 286/954, 286/955, 286/956, 286/957, 286/958, 286/959, 286/960, 286/961, 286/962, 286/963, 286/964, 286/965, 286/966, 286/967, 286/968, 286/969, 286/970, 286/971, 286/972, 286/973, 286/974, 286/975, 286/976, 286/977, 286/978, 286/979, 286/980, 286/981, 286/982, 286/983, 286/984, 286/985, 286/986, 286/987, 286/988, 286/989, 286/990, 286/991, 286/992, 286/993, 286/994, 286/995, 286/996, 286/997, 286/998, 286/999, 286/1000, 286/1001, 286/1002, 286/1003, 286/1004, 286/1005, 286/1006, 286/1007, 286/1008, 286/1009, 286/1010, 286/1011, 286/1012, 286/1013, 286/1014, 286/1015, 286/1016, 286/1017, 286/1018, 286/1019, 286/1020, 286/1021, 286/1022, 286/1023, 286/1024, 286/1025, 286/1026, 286/1027, 286/1028, 286/1029, 286/1030, 286/1031, 286/1032, 286/1033, 286/1034, 286/1035, 286/1036, 286/1037, 286/1038, 286/1039, 286/1040, 286/1041, 286/1042, 286/1043, 286/1044, 286/1045, 286/1046, 286/1047, 286/1048, 286/1049, 286/1050, 286/1051, 286/1052, 286/1053, 286/1054, 286/1055, 286/1056, 286/1057, 286/1058, 286/1059, 286/1060, 286/1061, 286/1062, 286/1063, 286/1064, 286/1065, 286/1066, 286/1067, 286/1068, 286/1069, 286/1070, 286/1071, 286/1072, 286/1073, 286/1074, 286/1075, 286/1076, 286/1077, 286/1078, 286/1079, 286/1080, 286/1081, 286/1082, 286/1083, 286/1084, 286/1085, 286/1086, 286/1087, 286/1088, 286/1089, 286/1090, 286/1091, 286/1092, 286/1093, 286/1094, 286/1095, 286/1096, 286/1097, 286/1098, 286/1099, 286/1100, 286/1101, 286/1102, 286/1103, 286/1104, 286/1105, 286/1106, 286/1107, 286/1108, 286/1109, 286/1110, 286/1111, 286/1112, 286/1113, 286/1114, 286/1115, 286/1116, 286/1117, 286/1118, 286/1119, 286/1120, 286/1121, 286/1122, 286/1123, 286/1124, 286/1125, 286/1126, 286/1127, 286/1128, 286/1129, 286/1130, 286/1131, 286/1132, 286/1133, 286/1134, 286/1135, 286/1136, 286/1137, 286/1138, 286/1139, 286/1140, 286/1141, 286/1142, 286/1143, 286/1144, 286/1145, 286/1146, 286/1147, 286/1148, 286/1149, 286/1150, 286/1151, 286/1152, 286/1153, 286/1154, 286/1155, 286/1156, 286/1157, 286/1158, 286/1159, 286/1160, 286/1161, 286/1162, 286/1163, 286/1164, 286/1165, 286/1166, 286/1167, 286/1168, 286/1169, 286/1170, 286/1171, 286/1172, 286/1173, 286/1174, 286/1175, 286/1176, 286/1177, 286/1178, 286/1179, 286/1180, 286/1181, 286/1182, 286/1183, 286/1184, 286/1185, 286/1186, 286/1187, 286/1188, 286/1189, 286/1190, 286/1191, 286/1192, 286/1193, 286/1194, 286/1195, 286/1196, 286/1197, 286/1198, 286/1199, 286/1200, 286/1201, 286/1202, 286/1203, 286/1204, 286/1205, 286/1206, 286/1207, 286/1208, 286/1209, 286/1210, 286/1211, 286/1212, 286/1213, 286/1214, 286/1215, 286/1216, 286/1217, 286/1218, 286/1219, 286/1220, 286/1221, 286/1222, 286/1223, 286/1224, 286/1225, 286/1226, 286/1227, 286/1228, 286/1229, 286/1230, 286/1231, 286/1232, 286/1233, 286/1234, 286/1235, 286/1236, 286/1237, 286/1238, 286/1239, 286/1240, 286/1241, 286/1242, 286/1243, 286/1244, 286/1245, 286/1246, 286/1247, 286/1248, 286/1249, 286/1250, 286/1251, 286/1252, 286/1253, 286/1254, 286/1255, 286/1256, 286/1257, 286/1258, 286/1259, 286/1260, 286/1261, 286/1262, 286/1263, 286/1264, 286/1265, 286/1266, 286/1267, 286/1268, 286/1269, 286/1270, 286/1</p>		

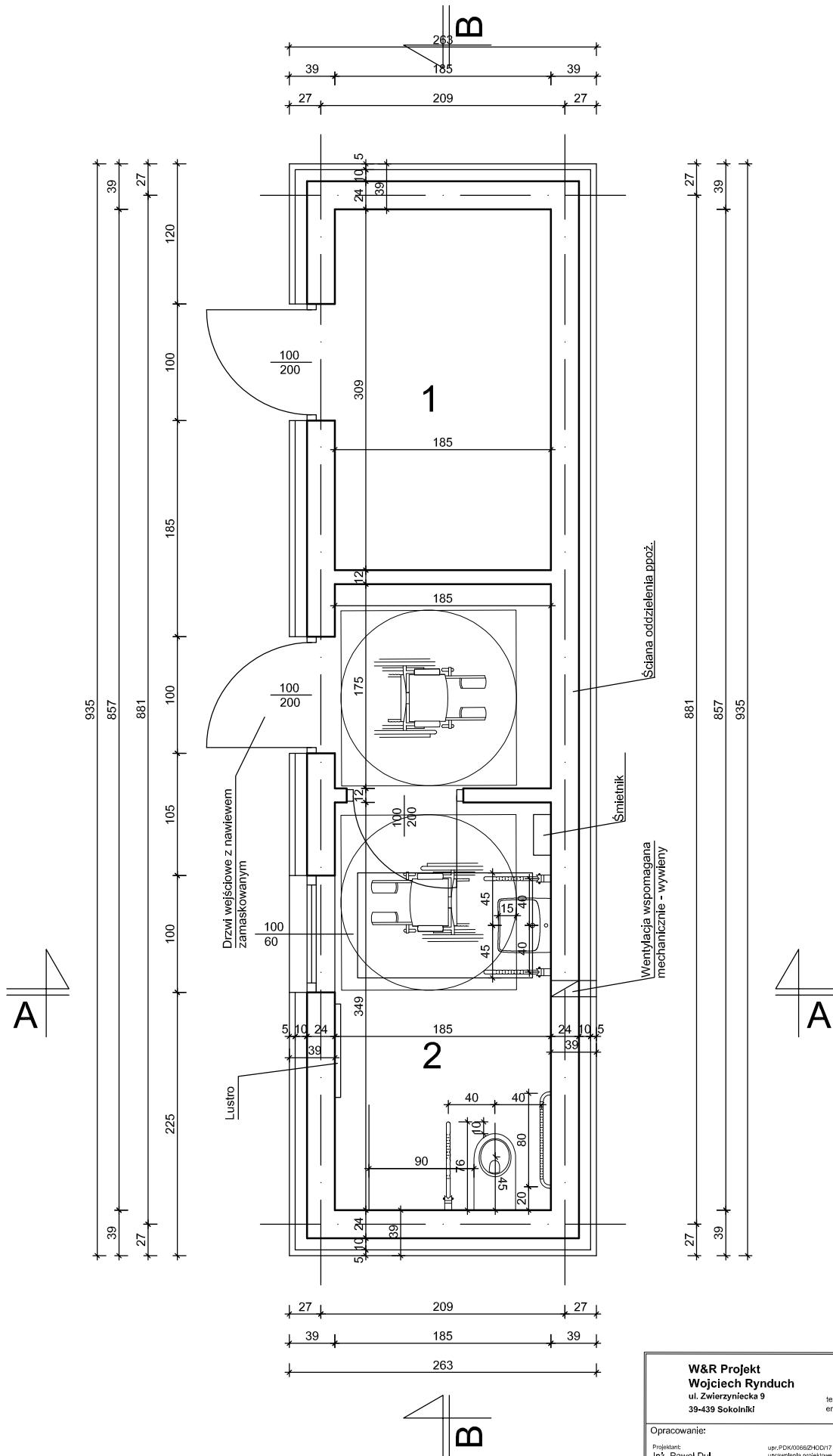


# Elewacja Tylna



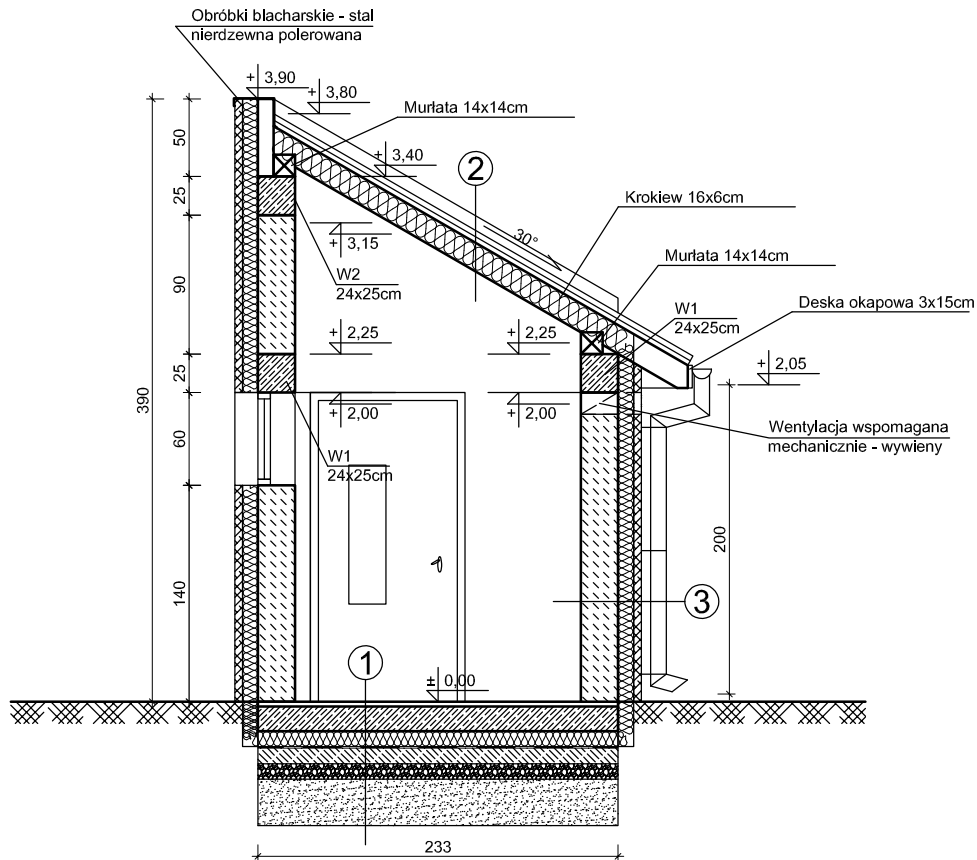
# Elewacja Prawa

<b>WAR Projekt</b> <b>Wojciech Rynduch</b> ul. Zwierzyńca 9 39-439 Sokolniki			tel. 797019467 email: rynduchwojciech@gmail.com		
<b>Opracowanie:</b>			<b>Podpis</b>		
Projektant: Inż. Paweł Dul			mgr inż. Wojciech Rynduch		
Sprawdził: mgr inż. Marek Froń			mgr inż. Wojciech Rynduch		
mgr inż. Wojciech Rynduch			mgr inż. Wojciech Rynduch		
Opis: Zagospodarowanie centrum osiedla mieszkaniowego w Gorzycach - Techniczny ogólny - etap II			Opis: Zagospodarowanie centrum osiedla mieszkaniowego w Gorzycach - Techniczny ogólny - etap II		
Budynek WC			Budynek WC		
Nazwa rysunku: Elewacje cz. 2 B-WC			Skala: 1:50		
Inwestor: Gmina Gorzyce ul. Sandomierska 75, 39-432 Gorzyce NIP: 667-2267-7154			Lokalizacja: Gmina Gorzyce ul. Sandomierska 75, 39-432 Gorzyce NIP: 667-2267-7154		
Zlecenie nr: 12017			Zlecenie nr: 12017		



1 - Pom. techniczne 5,72 m<sup>2</sup>  
2 - WC 9,70 m<sup>2</sup>

<b>W&amp;R Projekt</b> <b>Wojciech Rynduch</b> ul. Zwierzyniecka 9 39-439 Sokołniki tel. 797019497 email: rynduchwojciech@gmail.com		
Opracowanie: Projektant: Inż. Paweł Dul Sprawdzający: mgr inż. Marek Fróh mgr inż. Wojciech Rynduch	Podpis: upr.PDK006624QD/17 upr.PDK006624QD/17 upr.K-190052 upr.K-190052	Nazwa rysunku: <b>Rzut parteru B-WC</b> Skala: 1:50 Nr rys.
Obiekt: "Zagospodarowanie centrum osiedla mieszkaniowego w Gorzycach" Techniczny ogród - etap II Budynek WC	Inwestor: Gmina Gorzyce ul. Sandomierska 75, 39-432 Gorzyce NIP 867-20-77-154 Lokalizacja: m. Gorzyce, gm. Gorzyce 2542/9, 2534, 2543, 2544, 2542/10, 2467/2, 2541/4, 2467/3, 2025/18, 2467/1, 2557,1 Obręb 0002 Gorzyce, jedn. ew. 182002_2 Gmina Gorzyce.	



- |  |  |  |
|--|--|--|
| <p>①</p> <ul style="list-style-type: none"> <li>• Płytki ceramiczne 50x50cm antypoślizgowe łatwowymywalne</li> <li>• Płyta żelbetowa gr. 16cm, zbrojona prętami fi 12mm (siatka co 20cm)</li> <li>• Styrodur gr. 10cm</li> <li>• Folia PP gr. 1 mm</li> <li>• Chudy beton gr. 10cm</li> <li>• Kruszywo łamane 0/32 zagęszczone do Is=1,00 gr. 10cm,</li> <li>• Grunt G1</li> </ul> | <p>②</p> <ul style="list-style-type: none"> <li>• Gont bitumiczny</li> <li>• Papa podkładowa</li> <li>• 2x płyty GKFi o podwyższonej odporności ogniowej min. REI 120, NRO</li> <li>• Szczelina wentylacyjna</li> <li>• Łaty i kontrłaty</li> <li>• Membrana dachowa</li> <li>• Krokiew 6x16cm na okapie poza licem ściany krokiew heblowana</li> <li>• Wełna mineralna 16 cm, między krokiewiami</li> <li>• Folia paratizacyjna</li> <li>• Płyta G-K wodoodporna</li> </ul> | <p>③</p> <ul style="list-style-type: none"> <li>• Płytki granitowe 100x500x2cm</li> <li>• Siatka elewacyjna wtopiona pod kamień elewacyjny, gr. 2cm</li> <li>• Styropian gr. 10cm</li> <li>• Bloczki z betonu komórkowego gr. 24cm, np.: Ytong Energo P+W</li> <li>• Tynk cementowo-wapienny</li> <li>• Płytki ceramiczne, łatwo zmywalne</li> </ul> |
|--|--|--|

#### UWAGA!

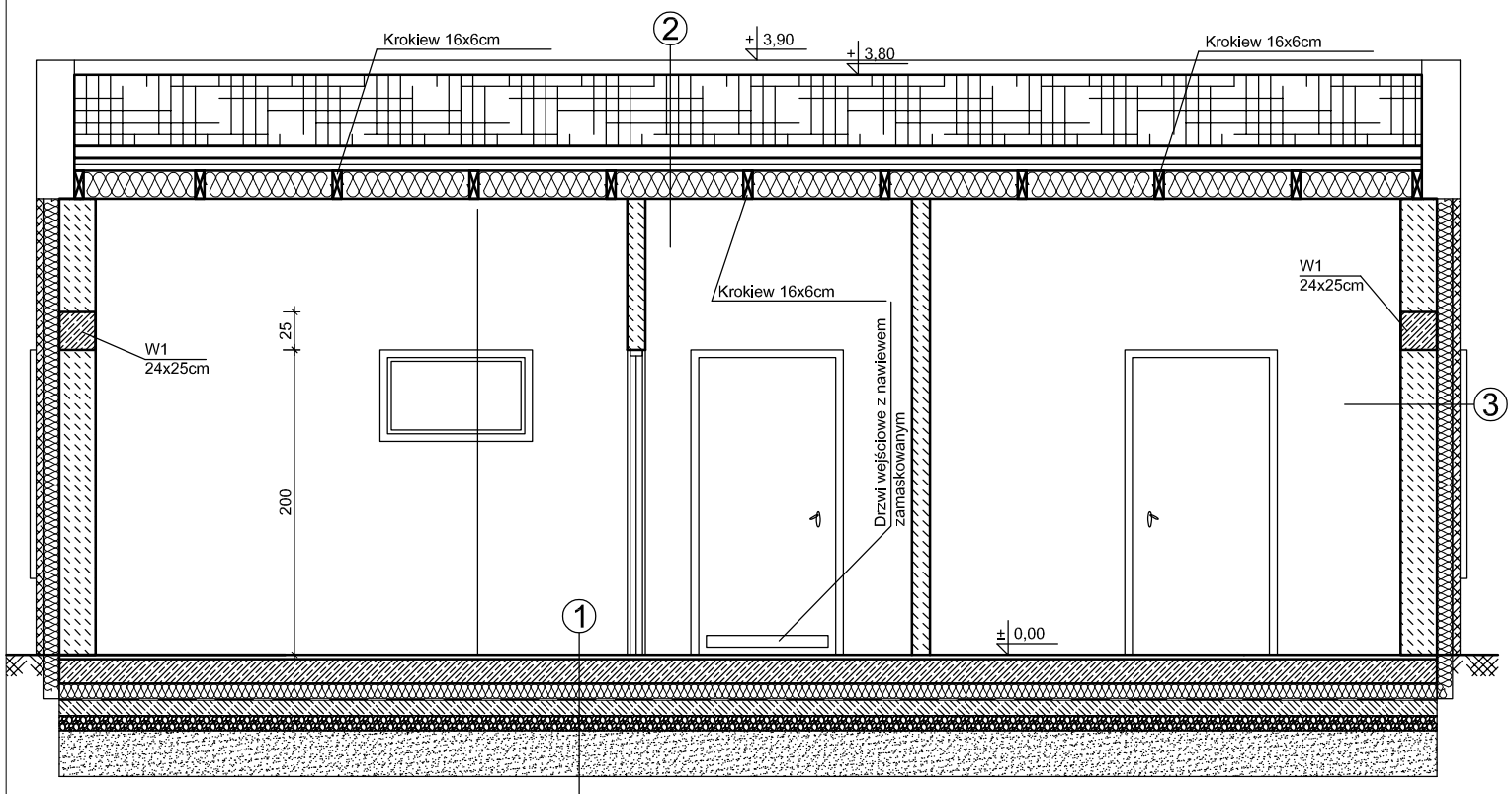
W1 - wieniec obwodowy 24x25cm, 5x Ø12mm  
W2 - wieniec 24x25cm pod murlatą, 5x Ø12mm

1. BETON C16/20 (B20)
2. STAL  
zbrojeniowa A-III 34GS  
pręty rozdzielcze A-III 34GS  
zakład:  
 $L_{min}=40d=40 \cdot 0,012m=0,48m$
3. Pod murlatę podłożyć pasek papy.
4. Murlaty kotwić do wieńca obwodowego kotawami ocynkowanymi średnicy Ø16mm w odstępach max co 1,20m

**W&R Projekt**  
**Wojciech Rynduch**  
ul. Zwierzyniecka 9  
39-439 Sokołki

tel. 797019497  
email: rynduchwojciech@gmail.com

Opracowanie:		Podpis	Nazwa rysunku:
Projektant: Inż. Paweł Dul Sprawdzający: mgr Inż. Marek Froń		upr.FDK/00662/HOD/17 uprawnienia projektowe w specjalności Inżynierii (inż.drogowej) upr.K-19002 uprawnienia projektowe w specjalnościach drogowej i konstrukcyjnej	Przekrój A-A B-WC
mgr inż. Wojciech Rynduch			Skala: 1:50
			Nr rys.
		Inwestor: Gmina Gorzyce ul. Sandomierska 75, 39-432 Gorzyce NIP 867-20-77-154	
Oblek: "Zagospodarowanie centrum osiedla mieszkanlowego w Gorzycach " Techniczny ogród - etap II Budynek WC		Lokalizacja: m. Gorzyce, gm. Gorzyce 2542/9, 2534, 2543, 2544, 2542/10, 2467/2, 2541/4, 2467/3, 2025/18, 2467/1, 2557,1 Obreń 0002 Gorzyce, jedn. ew. 182002_2 Gmina Gorzyce.	
		Zlecenie nr: 1/2017	



- 1
- Płytki ceramiczne 50x50cm antypoślizgowe łatwowymywalne
  - Płyta żelbetowa gr. 16cm, zbrojona prętami  $\phi$  12mm (siatka co 20cm)
  - Styrodur gr. 10cm
  - Folia PP gr. 1 mm
  - Chudy beton gr. 10cm
  - Kruszywo łamane 0/32 zagęszczone do  $I_s=1,00$  gr. 10cm,
  - Grunt G1
- 2
- Gont bitumiczny
  - Papa podkładowa
  - 2x płyty GKFi o podwyższonej odporności ogniowej min. REI 120, NRO
  - Szczelina wentylacyjna
  - Łaty i kontr łaty
  - Membrana dachowa
  - Krokiew 6x16cm na okapie poza licem ściany krokiew heblowana
  - Wełna mineralna 16 cm, między krokiewiami
  - Folia paraizolacyjna
  - Płyta G-K wodoodporna
- 3
- Tablica informacyjna z blachy nierdzewnej obrobiona kształtownikami, 350x150cm
  - Płytki granitowe 100x500x2cm
  - Siatka elewacyjna wtopiona pod kamień elewacyjny, gr. 2cm
  - Styropian gr. 10cm
  - Błoczek z betonu komórkowego gr. 24cm, np.: Ytong Energo P+W
  - Tynk cementowo-wapienny
  - Płytki ceramiczne, łatwo zmywalne

#### UWAGA!

W1 - wieniec obwodowy 24x25cm, 5x  $\phi$ 12mm

- BETON C16/20 (B20)
- STAL  
zbrojeniowa A-III 34GS  
pręty rozdzielcze A-III 34GS  
zakład:  
 $L_{min}=40d=40 \cdot 0,012m=0,48m$
- Pod murłatę podłożyć pasek papy.
- Murłatę kotwić do wieńca obwodowego kotawami ocynkowanymi średnicy  $\phi$ 16mm w odstępach max co 1,20m

**W&R Projekt**  
**Wojciech Rynduch**  
ul. Zwierzyniecka 9  
39-439 Sokolniki

tel. 797019497  
email: rynduchwojciech@gmail.com

Opracowanie:

Podpis

Nazwa rysunku:

Przekrój B-B B-WC

Projektant:  
Inż. Paweł Dul  
Sprawdzający:  
mgr inż. Marek Froń

upr. PDK/006624/DC/17  
uprawnienia projektowe w specjalności  
budynkowej (drogowej)  
upr. K-19302  
uprawnienia projektowe w specjalnościach  
drogowej i konstrukcyjnej

mgr inż. Wojciech Rynduch

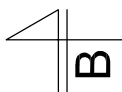
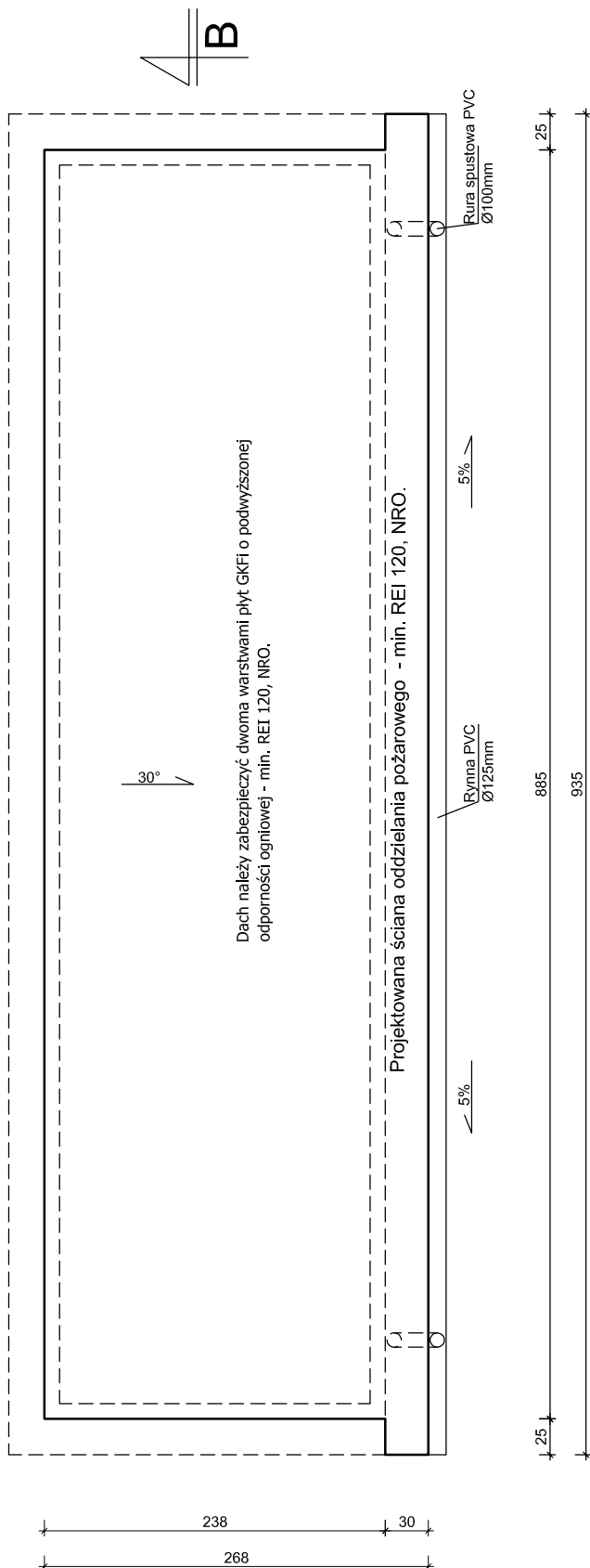
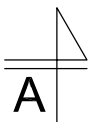
Skala: 1:50

Nr rys.

Inwestor:  
Gmina Gorzyce  
ul. Sandomierska 75, 39-432 Gorzyce  
NIP 867-20-77-154

Obiekt:  
"Zagospodarowanie centrum osiedla  
mieszkańcowego w Gorzycach"  
Techniczny ogród - etap II  
Budynek WC

Lokalizacja:  
m. Gorzyce, gm. Gorzyce  
2542/9, 2534, 2543, 2544, 2542/10, 2467/2, 2541/4,  
2467/13, 2025/18, 2467/1, 2557,1  
Obręb 0002 Gorzyce,  
jedn. ew. 182002\_2 Gmina Gorzyce.



A

A

238

30

268

**W&R Projekt**  
**Wojciech Rynduch**  
ul. Zwierzyniecka 9  
39-439 Sokolniki

tel. 797019497  
email: rynduchwojciech@gmail.com

Opracowanie:

Podpis

Nazwa rysunku:

Rzut dachu B-WC

Projektant:  
Inż. Paweł Dul  
Sprawdzający:  
mgr Inż. Marek Fröh

upr.PDK000662HOD/17  
uprawnienia projektowe w specjalności  
Inżynier (Inżynier) drogowej  
upr.K-19002  
uprawnienia projektowe w specjalnościach  
drogowej i konstrukcyjnej

mgr inż. Wojciech Rynduch

Skala: 1:50

Nr rys.

Inwestor:  
Gmina Gorzyce  
ul. Sandomierska 75, 39-432 Gorzyce  
NIP 867-20-77-154

Obiekt:  
"Zagospodarowanie centrum osiedla  
mieszkaniowego w Gorzycach"  
Techniczny ogród - etap II  
Budynek WC

Lokalizacja:  
m. Gorzyce, gm. Gorzyce  
2542/9, 2534, 2543, 2544, 2542/10, 2467/2, 2541/4,  
2467/3, 2025/18, 2467/1, 2557,1  
Obreń 0002 Gorzyce,  
jedn. ew. 182002\_2 Gmina Gorzyce.

Zlecenie nr: 1/2017



